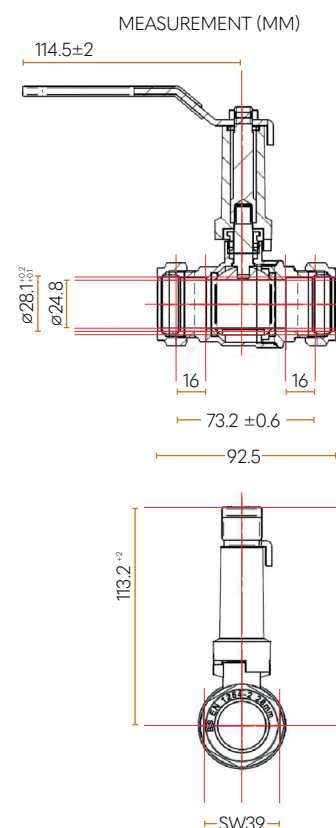
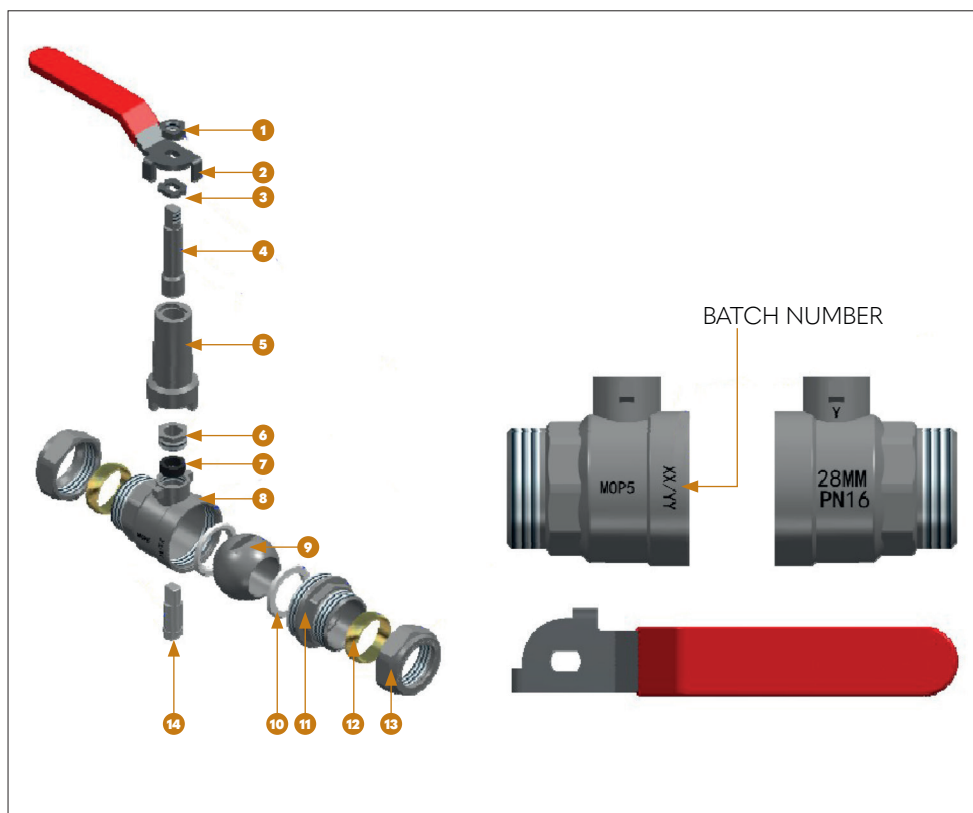


## BALL VALVE

Full bore 28mm compression ball valve with nickel-plated brass valve body and red handle to be used in water applications



NO.	NAME	MATERIAL	QTY	NO.	NAME	MATERIAL	QTY
1	NUT	STEEL WITH DACROMMET PLATED	1	8	BODY	BRASS WITH NICKEL PLATED	1
2	HANDLE	STEEL WITH DACROMMET PLATED	1	9	BALL	BRASS WITH CHROME PLATED	1
3	FLAT WASHER	STEEL WITH BLUE ZINC PLATED	1	10	SEAL	PTFE	2
4	EXTENSION STEM	BRASS WITH NICKEL PLATED	1	11	BONNET	BRASS WITH NICKEL PLATED	1
5	VALVE STEM SLEEVE	AL-46100	1	12	SLEEVE	CW507L	2
6	PACKING NUT	BRASS WITH NICKEL PLATED	1	13	CONNECTION NUT	BRASS WITH NICKEL PLATED	2
7	PACKING	GRAPHITE	1	14	STEM	BRASS WITH NICKEL PLATED	1

## SPECIFICATIONS / FEATURES

- Connection: Compression
- Material: Nickel-plated brass
- Working temperature: -10°C to 85°C
- Pressure range: 16 bar at 30° C, 10 bar at 65° C and 8 bar at 85° C
- Size: 28mm
- Type: Full bore ball valve
- Compression complies with BS EN1254-2
- Pressure test under 0.6-0.8 MPa without any leakage
- Suitable for hot and cold water
- Working pressure: 1.6 MPa
- Long stemmed for use with ASHP insulation upto 25mm thick

## VALVES BALL VALVE

The DiversiTech International sales team are available to answer your questions or queries on this product. Our experts are waiting for your call +44 (0)115 900 5858 or if you prefer send an email to [sales@diversitech.com](mailto:sales@diversitech.com) or visit [www.diversitech.global](http://www.diversitech.global)

**DIVERSITECH**  
INTERNATIONAL

Glaisdale Drive East  
Nottingham NG8 4LY  
United Kingdom